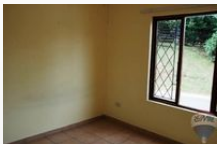


 **PHOTO GALLERY**



 **PROPERTY DETAILS** Web Ref: 300314508


**R690,000**

Monthly Bond Repayment R6,208.11

**2 BEDROOM FLAT FOR SALE IN AMANZIMTOTI**

Super Garden Simplex! Neat, Stepless Simplex With Small Pet Friendly Garden. Centrally Located In A Secure Complex, Near Schools And Shopping Centre.

Listed 10 May 11 / Views 169

 **FEATURES**

<b>Bedrooms</b>	2	<b>Security</b>	-
<b>Bathrooms</b>	1	<b>Flatlet</b>	-
<b>Reception Rooms</b>	2	<b>Domestic Accom.</b>	-
<b>Study</b>	-	<b>Pool</b>	-
<b>Garages</b>	1	<b>Furnished</b>	false
<b>Carports</b>	0	<b>Pets Allowed</b>	No

 **PROPERTY FINANCE**

**Bond Repayment Calculator**

Monthly Repayment (R) 6,208.11

**Transfer Costs Calculator**

Transfer Costs (R) 19,308.00

**Bond Costs Calculator**

Bond Costs (R) 9,430.80

 **CONTACT DETAILS**


Debbie van Rooyen  
**Upper Highway Estates CC**

**Cell Number:** 082 413 0531  
**Office Number:** +27 (0)31 903 2220

**debbie@teamremax7.co.za**  
**www.remaxtoti.co.za**

 **LOCATION MAP**



 **NOTES**

**Disclaimer:** While every effort will be made to ensure that the information contained within the www.remaxtoti.co.za website is accurate and up to date, RE/MAX Toti makes no warranty, representation or undertaking whether expressed or implied, nor do we assume any legal liability, whether direct or indirect, or responsibility for the accuracy, completeness, or usefulness of any information. Prospective purchasers should make their own enquiries to verify the information contained herein.